



Energy Development in Alaska

Robert Swenson

**State Geologist & Director, Alaska Division of Geological & Geophysical Surveys
Fairbanks, Alaska**

Note: AGS meetings will be at the BP Energy Center for 2010-2011.

Please check the website (www.alaskageology.org) and issues of the AGS newsletter for updates.

*This Newsletter promotes the May luncheon of the Alaska Geological Society
to be held Thursday, May 19th, at the BP Energy Center.*

Alaska is a wonderful place to live.

Few regions on earth accommodate the breadth of environments in which Alaskans take great pride—from rain forests to ‘deserts’, rugged coastlines to expansive plains, volcanoes to permafrost, dark days to sunny nights. Many of us were drawn to Alaska because of this tremendous diversity and natural abundance—both Native peoples and newcomers alike. Geologic diversity helps underpin much of the ecologic variation we enjoy and also provides for a natural resource base that is second to none. We are all very fortunate to call Alaska home.

Another key aspect that draws many of us to this land is the mere scale of it all. Nowhere else in the United States can one walk in a straight line for more than 900 miles and not expect to encounter a single piece of man-made infrastructure, and possibly not even another human. For some, just the thought of that stirs primitive cells deep within our psyche. As always, however, there is another side to the story.

The same reasons that have drawn many to the natural abundance in this great land likewise create significant challenges to our livelihood. The sparse population and lack of infrastructure challenge our ability to sustain viable economies that help support our families and maintain healthy lifestyles. The unavoidable impact on the environment associated

AGS Luncheon

Date & Time: May 19th, 11:30 am – 1:00 pm

Program: Energy Development in Alaska

Speaker: Robert Swenson, State Geologist

Place: BP Energy Center

Reservations: Please make your reservation before noon
Tuesday, May 17th, 2011.

Cost: Seminar only, no meal: Free

Reserve a box lunch: \$15

Reserve a hot lunch: \$20

Lunch with no reservation:
On an “as-available” basis only

E-mail reservations: vp@alaskageology.org
Or phone (907) 269-8673
(Ken Helmold, AGS VP)

For more information: visit the AGS website:

www.alaskageology.org

with resource development, regardless of how small, is unacceptable to some. Access to jobs and reasonably priced domestic energy are paramount to many, yet limited infrastructure and exceedingly small local markets create economic hurdles that have held much development at bay. Finally, and most importantly to some, declining production from our existing resource base threatens to dramatically change the revenue picture of the state, and affect nearly all Alaskans at some level. Clearly, energy development resides at the heart of many of these dichotomies and often provides fodder for lively debates.

Attempts to examine energy development in Alaska should differentiate at least two distinct efforts: Development for export and development for domestic consumption. In a 'perfect world' one effort supports the other, whether by providing access to a low-cost

domestic supply from a high-volume export stream; or providing sufficient public capital for investment in other non-export energy exploitation. There are many examples of this synergistic relationship across Alaska and the United States, and they have worked well for many years. Nevertheless, it appears that Alaska now finds itself at a crossroads that presents many routes to choose from, some quite divergent. Many would argue that we are on the verge of starvation while sitting in the middle of the garden.

During this talk we will examine the tremendous diversity of energy resources across the state and how they might fit into a global or local picture. We will also explore some of the options, and what we might do to address a majority of the needs. There are no 'correct' answers in this debate, yet the choices we make over the coming years will certainly have an effect—possibly dramatic—on our future.

About the Author:

Robert "Bob" Swenson received his bachelors in geology from the University of Montana, and masters in geology from the University of Wyoming. He began his geologic pursuits in Alaska in 1991 analyzing the energy resource potential of sedimentary basins across much of Alaska for ARCO, ConocoPhillips, and later as exploration manager for Denali Oil & Gas. Bob left the industry in 2004 to become deputy director of geologic research for the Department of Natural Resources, and in 2005 became the Alaska State Geologist and Director of the Division of Geological & Geophysical Surveys. In January 2010 Governor Parnell appointed Bob interim in-state gas line project manager; he returned to his duties at DGGs in July 2010. Bob is the upcoming Vice President of the Association of American State Geologists and serves on numerous federal and state advisory boards dealing with energy resources, geologic hazards, and minerals assessments.

From the President's Desk

I find it hard to believe with all of the activity going on, but our society year is rapidly winding down, and it's time to elect new officers to next year's board. As is often the case, we have only one name for each position, but you are welcome to write in additional candidates. Please review the ballot in this newsletter, fill it out, and return it to AGS by mail or in person at the May luncheon. And thanks so much to those of you who have stepped up to serve your society as officers and board members! In addition to the list of candidates, the board is also seeking approval to add one sentence to the scholarships section of the bylaws. It is simply a clarification on the scholarship application process that we felt was needed.

We've had a busy and successful year with our series of luncheon seminars, scholarship awards, community outreach, and serving as host society for the Pacific Section AAPG Meeting. Thanks go Ken Helmold for arranging an excellent and varied series of luncheon talks, to Robert Blodgett and Sue Karl for heading up the scholarship awards, and to Jana Lage for her involvement with the Science Fair and other community outreach work. It's impossible in this brief note to mention all of the things that our various members are doing to support the PSAAPG Meeting. I would, however, like to give special thanks to Dave Hite for taking on the AAPG Co-chair responsibilities and to the team of meeting chairs that he put together: Sandy Phillips, Oral Sessions Chair, Steve Wright, Poster Sessions Chair, Robert Morse, Short Courses Chair, Tom Plawman, Field Trips Chair, and Tom Walsh, Exhibits Chair. They have all been working very hard to ensure that we provide a great experience for the meeting attendees.

Our talk this month will be given by our State Geologist, Bob Swenson, and I think that it will be both inspiring and sobering. The future livelihood of all Alaskans is dependent upon positive outcomes from good energy development decisions to be made by corporations, the state, and the federal government. It will be interesting to hear Bob lay out the choices before us.

Finally, please join us for one last activity to kick off summer in Alaska. The joint Geophysical Society/Geological Society picnic will be held on the evening of Wednesday, May 25 at Kincaid Park. Please mark your calendars and plan to attend this evening of great food and socializing.

It's been a great honor and pleasure to serve our society as President this year. Ken Helmold will be taking over starting in July, and his long experience with the society ensures that it will be a smooth transition. Thanks to all of you who have helped to make this a successful year!

- Tom

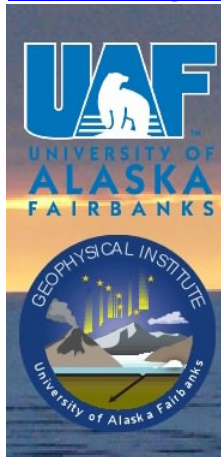


ICAM VI

The Sixth International Conference on Arctic Margins
Fairbanks, Alaska, USA; 31 May - 2 June 2011

<http://www.gi.alaska.edu/icam6/>

<http://www.gi.alaska.edu/icam6/>



Rolling abstract acceptance within one week of submission

April 30: Last day for early bird registration

Venue: Davis Concert Hall, University of Alaska Fairbanks campus

Travel: Symposium is timed with direct flights from/to Europe

Scientific sessions:

- Hydrocarbon potential and gas hydrates;
- Science issues relating to UNCLOS Article 76;
- Geodynamic significance of arctic magmatism;
- Vertical motions in the Arctic, tectonic and glacial;
- Geology and palaeogeography of the arctic continental margins;
- Evolution of the Arctic Ocean basins, including plate reconstructions, magmatism, and sedimentology;
- Modern arctic environments, including geological, climatic, and oceanographic processes; and
- Recent advances in arctic research technology

Contact the organizers: ICAM6@gi.alas

The Alaska Geological Society

LUNCHEON SCHEDULE 2010 - 2011

Updates on the web at:

<http://www.alaskageology.org>

September 2010	Thurs., Sept. 16 th , David Scholl, USGS, Earthquake and Tsunami Hazards of the Aleutians
October 2010	Thursday, Oct. 21 st , Peter Haeussler, USGSNeo-tectonics of Cook Inlet
November 2010	Thursday, Nov. 18 th , Joann Welton, EXXON, Evaluating siliciclastic reservoir quality
December 2010	Thursday, Dec. 9 th – Alison Till, USGS, Reconstruction of Arctic Alaska
January 2011	Thursday, Jan. 20 th – Chris Waythomas, USGS AVO, Eruption of Kasatochi
February 2011	Thursday, Feb. 17 th , James Coleman, USGS, Tight-Gas Sandstone Reservoirs (AAPG Distinguished Lecturer)
March 2011	Thursday, March 17 th – Lisa Wirth, UAF Alaska Satellite Facility
April 2011	Thursday, April 21 st , Erik Hulm, BP Alaska, Heavy Oil of Alaska
May 2011	Thursday, May 19 th – Robert Swenson, DGGs, Energy development in Alaska

If you would like to volunteer a talk or would like to suggest a speaker, please contact Ken Helmold at 269-8673

182 WELL NORTH SLOPE - BEAUFORT SEA BIOSTRATIGRAPHIC DATABASE OF INTEGRATED FORAMINIFERA & PALYNOMORPH ZONE TOPS

Excel spreadsheet format on CD. Color-coded paleoenvironments (water depths)

In addition, for 85 Proprietary Wells included are: Integrated, Foram & Paly Summaries, Hi-Res Biostratigraphic Plots with diversity/abundance, cumulative faunal & floral displays & graphic biofacies plots.

For more information, list of wells, & price contact:
Micropaleo Consultants - (760) 942-6082 or micropaleo@cox.net
Hideyo Haga - (619) 421-1692 or hhpaleo@cox.net



MICROPALAEO
CONSULTANTS

Community Education Corner - Science Fair

By Jana DaSilva Lage

The 56th Annual Alaska Science and Engineering Fair was held on March 19th at Begich Middle School in Anchorage. Special thanks go out to Sue Karl and Kristin Elowe who spent the day judging projects in the Earth and Space Science and Environmental Science categories for AGS. Projects in the High School, Middle School, and Elementary Divisions were reviewed. In the end, there were no projects selected in the High School Division. The following 9 students from Anchorage, Eagle River, Wasilla, and Kotzebue received awards:

Middle School Division

Isabelle Libbrecht (6th Grade) *Is there a better type of Coal?*
Parker Everett (8th Grade) *Glacier Sublimation*

Elementary Division

Andy Hemry (3rd Grade) *Electricity Rocks*
Noah Lockhart (2nd Grade) *Sinkholes*
Sebastian Libbrecht (3rd Grade) *Can I make rocks at home?*
Patrick Noble (3rd Grade) *How are fossils made?*
Sam Strickland (4th Grade) *That's why they call it space.*
Anika Syren (1st Grade) *The Moon*
Meghan Thompson (5th Grade) *Tsunami: Waves of Destruction*

All the students will receive a \$25 gift card to Barnes and Noble and are invited to attend our April luncheon. This year AGS has received a donation which allows us to award a Grand Prize to the top project in Geology. Isabelle Libbrecht was selected as the award winner and she will receive \$100 cash. The student posters will be posted on the AGS web site under Science Fair.

In addition to our AGS judges, I would also like to recognize two UAA Geology students: Emily Eidam and Hillary Jochens who volunteered as category judges at the science fair. They did a great job, and their time and effort is very much appreciated.

Thanks also to Greg Durocher, Tina Neal, and Brendan Kelley (USGS) for donating door prizes to the Science Fair.

**Alaska Geological Society
May 2011, Election Ballot
Officers, Board Members, Amendment**



AGS Officers

- President Elect* – Steve Wright
(President for 2012 -2013)
- Vice President* – Dick Garrard
- Secretary* – Chad Hults
- Treasurer* – Al Hunter

Write-in Candidate(s)

Position and Name

2011-2013 Board Members (vote for three)

- Board Member* – Tom Homza
- Board Member* – Dave Schoderbek
- Board Member* – Jim Brown

2011-2013 AAPG Delegate

(only Active AAPG members may vote for the AAPG delegate)

- AAPG Delegate* – David Hite

Proposed amendment to bylaws in ***bold italics & underlined***:

Old:

**ARTICLE XII.
SCHOLARSHIPS**

The Society may administer any number of scholarship programs. Proposals for new scholarship programs shall be considered, and established by the Board of Directors of the Society, who shall be responsible for approving scholarship criteria. The Scholarship Committee shall administer scholarships, including selection of recipients and disbursement of funds. Distribution amounts and timing for each Scholarship Fund will be established by the Scholarship Committee in consultation with the Finance Committee, ratified by a majority vote of the Board of Directors of the Society, and will be dictated by individual scholarship program criteria. The recommendations of the Scholarship Committee for all scholarship and honor awardees in a given year must be approved by the Board of Directors before any funds can be dispersed.

New:

**ARTICLE XII.
SCHOLARSHIPS**

The Society may administer any number of scholarship programs. Proposals for new scholarship programs shall be considered, and established by the Board of Directors of the Society, who shall be responsible for approving scholarship criteria. The Scholarship Committee shall administer scholarships, including selection of recipients and disbursement of funds. Distribution amounts and timing for each Scholarship Fund will be established by the Scholarship Committee in consultation with the Finance Committee, ratified by a majority vote of the Board of Directors of the Society, and will be dictated by individual scholarship program criteria. ***Eligible students may apply for any number of scholarship programs in a given year, but must submit separate applications for each scholarship program.*** The recommendations of the Scholarship Committee for all scholarship and honor awardees in a given year must be approved by the Board of Directors before any funds can be dispersed.

Shall the AGS amend the bylaws of the organization with the changes approved by a vote of the Alaska Geological Society Board of Directors?

- Approve*
- Disapprove*

*Please mail your ballot by May 21st to:
Alaska Geological Society
PO Box 101288
Anchorage, Alaska 99510*

You may fold and tape this sheet and use the address printed on the next page, or bring it to the Thursday, May 19th luncheon.

**AGS Ballot 2011
Alaska Geological Society
PO Box 101288
Anchorage, Alaska 99510**

Meeting Information

The **American Geological Institute** provides a comprehensive list of national and international geoscience meetings at: <http://calendar.agiweb.org>

Local Meetings:

American Water Resources Association—Alaska Section

<http://www.awra.org/state/alaska/index.html>

Alaska Geological Society

<http://www.alaskageology.org>

Lunch meetings are held monthly September through May in Anchorage. For more information, contact Jim Clough, 451-5030.

Alaska Miners Association

<http://www.alaskaminers.org/>

The Anchorage branch of the AMA holds weekly meetings at 7 AM every Friday at the Denny's on Northern Lights and Denali. They hold regular luncheon meetings in association with SME. For more information, contact the AMA office at 563-9229.

American Institute of Professional Geologists

<http://www.aipg.org>

AIPG holds regular quarterly evening Section meetings in Anchorage and Fairbanks. For more information contact Mark Lockwood, President, at Shannon & Wilson, Inc., in Fairbanks, 907-458-3142.

Chugach Gem & Mineral Society

<http://www.chugachgms.org>

CG&MS holds all meetings at the First United Methodist Church on 9th Avenue. Contact their hotline at 566-3403 for information on regular monthly business meetings, monthly potlucks, and guidebook sales, including the new Alaska Rockhound Guidebook.

Geophysical Society of Alaska

<http://gsa.seg.org/>

Luncheon meetings are held monthly September through May at the ConocoPhillips Tower. For more information, contact Phil Rorison, 265-6321

Society of Petroleum Engineers

<http://alaska.spe.org/>

UAS Environmental Science Program

<http://www.uas.alaska.edu/envs>

National Association of Geology Teachers (NAGT)

<http://www.nagt>

Enhanced Alaska Digital Well Log Data Since 1989

OCS, 95 out of 100 Alaska OCS wells. Mud logs for some. North Aleutian Basin wells, onshore and offshore. North Slope, 556 wildcats and key field wells. Kuparuk River Field, first 567 wells drilled (pre-1985). Southern Alaska, 1063 wells including all wildcats and many field wells. Directional surveys for most.

All digital log files

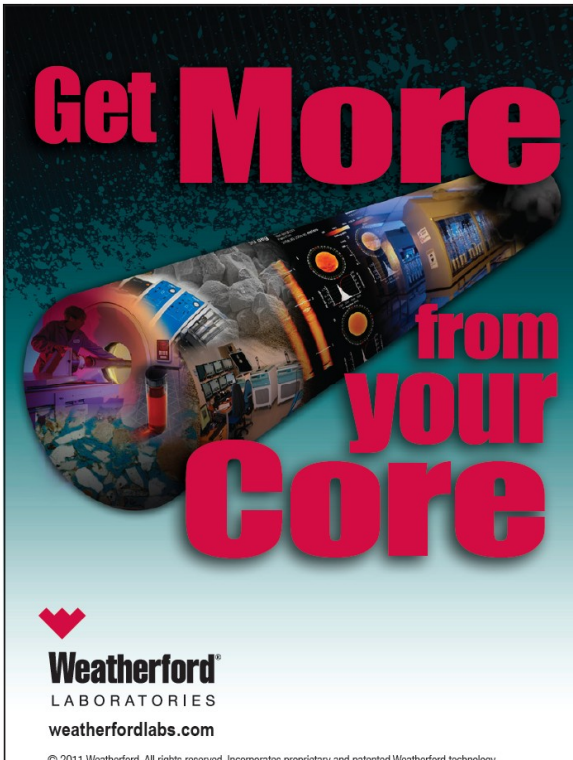
- Are depth shifted to match resistivity curves.
- Have core data rendered as a depth-shifted well log curve.
- Have SP both in original form and as a straightened curve.
- Have standardized mnemonics.
- Have Volume of Shale curves, derived from gamma ray for North Slope, derived from SP for Cook Inlet.
- Allow you to specify your own choice of mnemonics before delivery.
- Are updated periodically with new wildcat wells.
- Are delivered in LAS 2.0 format.

Contact Dan Shier:

303-278-1261

dan@rockypine.com

www.rockypine.com



Get More from your Core

Weatherford
LABORATORIES
weatherfordlabs.com

© 2011 Weatherford. All rights reserved. Incorporates proprietary and patented Weatherford technology.

With reservoirs becoming increasingly complex, you need the most accurate information you can get to better understand your reservoir.

Weatherford Labs helps you get more from your core by combining an unsurpassed global team of geoscientists, engineers, technicians and researchers with the industry's most comprehensive, integrated laboratory services worldwide. From core analysis, sorption, geochemistry and isotopic composition to detailed basin modeling and comprehensive data packages, we provide you with real reservoir rock and fluid information that hasn't been distilled by a simulator or iterated by software.

We call it "The Ground Truth™" – giving you the accurate answers you need for better reservoir understanding. You'll call it a better return on your reservoir investment. To learn more, contact TheGroundTruth@weatherfordlabs.com.

The Alaska Geological Society, Inc.
P.O. Box 101288
Anchorage AK 99510

On the web at: <http://www.alaskageology.org>

The Alaska Geological Society is an organization which seeks to promote interest in and understanding of Geology and the related Earth Sciences, and to provide a common organization for those individuals interested in geology and the related Earth Sciences.

This newsletter is the monthly (September-May) publication of the Alaska Geological Society, Inc. Number of newsletters/month: ~300

EDITOR
Greg Wilson
Alaska Geological Society, Inc.
P. O. Box 101288
Anchorage, AK 99510
e-mail: Gregory.c.wilson@conocophillips.com
(907) 263-4748 (office)

MEMBERSHIP INFORMATION

AGS annual memberships expire November 1. The annual membership fee is \$20/year. You may download a membership application from the AGS website and return it at a luncheon meeting, or mail it to the address above.

Contact membership coordinator Greg Wilson with changes or updates (e-mail: gregory.c.wilson@conocophillips.com; phone: 907-263-4690)

All AGS publications are now available for on-line purchase on our website. Check to see the complete catalogue.

<http://www.alaskageology.org/publications>

ADVERTISING RATES

Advertisements may be purchased at the following rates:
1/10 Page--\$190/9mo, \$75/1mo; size=1.8 x 3.5 inch
1/4 Page--\$375/9mo, \$95/1mo; size=4.5 x 3.5 or 2.2 x 7.5 inch
1/3 Page- \$470/9mo, \$105/1mo; size=7.0 x 3.5 or 3.0 x 7.5 inch
1/2 Page--\$655/9mo, \$125/1mo; size=9.0 x 3.5 or 4.5 x 7.5 inch
Full Page--\$1000/9mo, \$165/1mo; size=7.5 x 9.0 inch
1mo rate=(9mo rate/9)+\$50 (rounded up).

Contact Tim Ryherd (907) 269-8771 for advertising information.

**Place
Your Ad
Here**



Petrotechnical Resources Alaska

Alaska's Premier Oil and Gas Consultants

Skills

- Project Management
- Geophysics
- Geology
- Petrophysics
- Engineering

Areas of Expertise

- North Slope
- Cook Inlet
- Interior Basins
- Bristol Bay
- Gulf of Alaska

Data

- Digital Well Logs
 - Raw and interpreted data
- Well History
- Directional Surveys
- Formation Tops
- Seismic
 - USGS NPRA lines
- GIS
 - Land Status
 - Well locations

Tools

- Subsurface mapping tools
- Seismic interpretation tools
- Petrophysical interpretation tools
- ArcView/GIS tools

We can provide clients with individuals to fill specific needs, or with integrated teams to manage exploration and development projects.

For information about PRA including background material and a complete listing of our consultant staff, please visit our website at:

www.petroak.com.

Contact us at:

PRA
3601 C Street, Suite 822
Anchorage, AK 99503
(907) 272- 1232, (907) 272- 1344 (fax)
info@petroak.com www.petroak.com

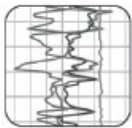
Get Ahead of the Game



Directional Survey Plus



Production Data



Digital Well Logs



With High Quality Well Data From TGS

Need an extra edge on the competition? TGS' high quality well data, comprehensive coverage and dedicated customer support can get you to the finish line.

Directional Survey Plus

Beyond simple directional survey data capture, Directional Survey Plus data are thoroughly researched, reprocessed and standardized.

US Production Data

TGS' nationwide production database features a visualization tool, leading industry exports and daily incremental updates.

Complete Curve LAS

Over 500,000 LAS well logs are now available in North America. Over six million well logs available in 30+ countries worldwide.

Find out more at www.tgsnopec.com/welldata or contact TGS Well Data at 888-LOG-LINE or WellData@tgsnopec.com



Geophysical
Products



Geological
Products



Imaging
Services



www.tgsnopec.com

2010 - 2011 Alaska Geological Society Board

Note: e-mail addresses now contain "at" instead of "@" Please change to @ when typing.

		Phone	e-mail	Workplace
President	Tom Morahan	230-1672	Tmorahan at petroak.com	PRA/ConocoPhillips
Past-President	Tom Homza	770-3701	Thomas.Homza at shell.com	Shell
President-Elect	Ken Helmold	269-8673	Ken.helmold at alaska.gov	DNR / DOG
Vice-President	vacant			
Treasurer	Al Hunter	263-7947	Alhunter at chevron.com	Chevron
Secretary	Chad Hults	786-7417	Chults at usgs.gov	USGS
Director 09-2011	Dave Boyer	564-5783	Boyerdl at bp.com	BP
Director 09-2011	Marwan Wartes	451-5036	Marwan.wartes at Alaska.gov	DNR / DGGS
Director 09-2011	Dick Garrard	244-1067	Rgarrard at talisman-energy.com	FEX
Director 09-2012	Lee Ann Munk	786-6895	aflm at uaa.alaska.edu	UAA
Director 08-2012	Lisa Wright	263-4823	Lisa.H.Wright at conocophillips.com	ConocoPhillips
Director 08-2012	Kirk Sherwood	334-5337	Kirk.Sherwood at boemre.gov	BOEMRE

Committees and Delegates

AAPG Delegate	Arlem Ehm	333-8880	Arlemehm at gci.net	Geological Consultant
AAPG Delegate & 2011 Conf. Chair	David Hite	258-9059	Hitelamb at alaska.net	Geological Consultant
Advertising	Tim Ryherd	269-8771	Tim.ryherd at Alaska.gov	DNR / DOG
Com. Ed./Science Fair	Jana DaSilva Lage	677-7883	Jldasilva5 at hotmail.com	
Field Trips	Tom Plawman	227-2781	Tom.plawman at bp.com	BP
Bylaws	Sue Karl	786-7428	Skarl at usgs.gov	USGS
Memberships	Greg Wilson	263-4748	Gregory.c.wilson at conocophillips.com	ConocoPhillips Alaska
Newsletter Editor	Greg Wilson	263-4748	Gregory.c.wilson at conocophillips.com	ConocoPhillips Alaska
Publications	Peter Johnson	334-5329	Peter.Johnson at boemre.gov	BOEMRE
Scholarship	Robert Blodgett	646-1922	robertBBlodgett at yahoo.com	Geological Consultant
Website	Jan Hazen		Jan at homestead-graphics.com	Consultant
Fundraising	Sunny Foster	269-8707	Sunny.Remmy at Alaska.gov	DNR / DOG

Alaska Geological Society, Inc.
P. O. Box 101288
Anchorage, AK 99510