



Geologic Use of Satellite Imagery Data

Scott Arko
Alaska Satellite Facility (ASF)
Geophysical Institute
Fairbanks, AK

*Note: AGS meetings will be at the BP Energy Center for 2010-2011.
Please check the website (www.alaskageology.org) and issues of the AGS newsletter for updates.
This Newsletter promotes the March luncheon of the Alaska Geological Society
to be held Thursday, March 17th, at the BP Energy Center.*

Please check the AGS website

www.alaskageology.org

to obtain the luncheon abstract
and speaker biography as they
become available.

For additional information, check
the Alaska Satellite Facility
website:

<http://www.asf.alaska.edu>

AGS Luncheon

Date & Time: March 17th, 11:30 am – 1:00 pm

Program: Geologic Use of Satellite Imagery Data

Speaker: Scott Arko, ASF

Place: BP Energy Center

Reservations: Please make your reservation before noon
Tuesday, March 15th, 2011.

Cost: Seminar only, no meal: Free

Reserve a box lunch: \$15

Reserve a hot lunch: \$20

Lunch with no reservation:
On an "as-available" basis only

E-mail reservations: vp@alaskageology.org
Or phone (907) 269-8673
(Ken Helmold, AGS VP)

For more information: visit the AGS website:

www.alaskageology.org

From the President's Desk

How time flies! We have only four months left in the current AGS business year, and it's already time to start thinking about plans and continuity for next year. Many of us are involved in planning the May PSAAPG/SPE meeting, and I know that it's a little hard to look beyond that date right now, but please also think about how you would like to be involved in our society next fall. I've asked Art Banet to serve as head of the nominations committee, and he will be compiling a slate of candidates for the May election over the next month or so. We will be electing a Vice President, President-elect, Secretary, Treasurer, and three Directors. Brief descriptions are as follows:

Vice President – A key position for our society, since the VP is responsible for the luncheon arrangements and talks and is usually involved in the annual technical conference as well.

President-elect – Serves as a Director and prepares a budget for the succeeding year. Becomes President in the succeeding year and chairs board and society meetings. Also appoints committee Chairs, signs correspondence, and communicates on behalf of the society.

Secretary – Takes the minutes at the board meetings and occasionally may handle or receive correspondence.

Treasurer – Another key position, since the Treasurer keeps the books, manages the society's funds, and prepares and files the tax return.

Directors – Attend board meetings as voting members and help conduct the business of the society.

If you are interested in any of the positions listed above, please contact Art or any of our current board members. We need volunteers willing to give a little of their time to help make our society successful.

Plans for the 2011 PSAAPG Annual Meeting, to be held at the Anchorage Sheraton Hotel May 8-11, are coming along well. You should have received the program by now, but if you did not, it is available on the AGS web site (<http://www.alaskageology.org/psaapgConvention2011.html>). Online registration is up and running as well. We hope to see you there!

- Tom

Call for volunteers Your local organization needs your help!!!

The success of our locally-hosted upcoming Pacific Section AAPG – Western Region SPE meeting is dependant on securing volunteers in three key areas:

- Oral session chairs
- Poster session chairs
- Oral & poster session judges

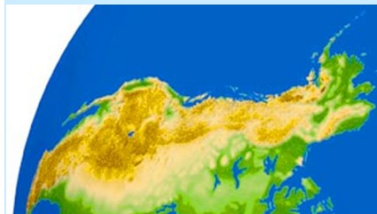
Please contact one of the technical session chairs below to volunteer your time!

Oral Session Chair:
Sandy Phillips 907.564.4587 sandra.phillips@bp.com

Poster Session Chair:
Steve Wright 907.263.7865 sswr@chevron.com

Judging Coordinator:
Pete Barker 907.248.7114 pbarker@gci.net

Arctic to the Cordillera: Unlocking the Potential



Pacific section AAPG & Western Region SPE

Technical Sessions: May 9-11, 2011 Anchorage, Alaska

Conference Co-hosting Organizations
Pacific Section American Association of
Petroleum Geologists & Western Region of the
Society of Petroleum Engineers

Supporting Organizations
Pacific Section – Society of Sedimentary Geology
Pacific Coast Section – Society of Exploration
Geophysicists



Local Hosting Society
Alaska Geological Society



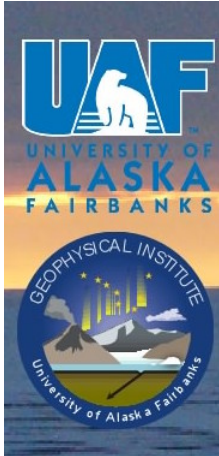


ICAM VI

The Sixth International Conference on Arctic Margins
Fairbanks, Alaska, USA; 31 May - 2 June 2011

<http://www.gi.alaska.edu/icam6/>

<http://www.gi.alaska.edu/icam6/>



*Deadlines - April 15: Abstract
Deadline*

*Rolling abstract acceptance within
one week of submission*

*April 30: Last day for online
registration*

*Venue: Davis Concert Hall, University
of Alaska Fairbanks campus*

*Travel: Symposium is timed with
direct flights from/to Europe*

Scientific sessions:

- Hydrocarbon potential and gas hydrates;
- Science issues relating to UNCLOS Article 76;
- Geodynamic significance of arctic magmatism;
- Vertical motions in the Arctic, tectonic and glacial;
- Geology and palaeogeography of the arctic continental margins;
- Evolution of the Arctic Ocean basins, including plate reconstructions, magmatism, and sedimentology;
- Modern arctic environments, including geological, climatic, and oceanographic processes; and
- Recent advances in arctic research technology

Contact the organizers: ICAM6@gi.alas

The Alaska Geological Society

LUNCHEON SCHEDULE 2010 - 2011

Updates on the web at:

<http://www.alaskageology.org>

September 2010	Thurs., Sept. 16 th , David Scholl, USGS, Earthquake and Tsunami Hazards of the Aleutians
October 2010	Thursday, Oct. 21 st , Peter Haeussler, USGS Neo-tectonics of Cook Inlet
November 2010	Thursday, Nov. 18 th , Joann Welton, EXXON, Evaluating siliciclastic reservoir quality
December 2010	Thursday, Dec. 9 th – Alison Till, USGS, Reconstruction of Arctic Alaska
January 2011	Thursday, Jan. 20 th – Chris Waythomas, USGS AVO, Eruption of Kasatochi
February 2011	Thursday, Feb. 17 th , James Coleman, USGS, Tight-Gas Sandstone Reservoirs (AAPG Distinguished Lecturer)
March 2011	Thursday, March 17 th – Lisa Wirth, UAF Alaska Satellite Facility
April 2011	Thursday, April 21 st , Erik Hulm, BP Alaska, Heavy Oil of Alaska
May 2011	Thursday, May 19 th – Robert Swenson, DGGs, Energy development in Alaska

If you would like to volunteer a talk or would like to suggest a speaker, please contact Ken Helmold at 269-8673



MICROPALEO
CONSULTANTS

182 WELL NORTH SLOPE - BEAUFORT SEA BIOSTRATIGRAPHIC DATABASE OF INTEGRATED FORAMINIFERA & PALYNOMORPH ZONE TOPS

Excel spreadsheet format on CD. Color-coded paleoenvironments (water depths)

In addition, for 85 Proprietary Wells included are: Integrated, Foram & Paly Summaries, Hi-Res Biostratigraphic Plots with diversity/abundance, cumulative faunal & floral displays & graphic biofacies plots.

For more information, list of wells, & price contact:

Micropaleo Consultants - (760) 942-6082 or micropaleo@cox.net
Hideyo Haga - (619) 421-1692 or hhpaleo@cox.net

SCHOLARSHIP RECIPIENTS 2011

Don Richter Memorial Scholarship Award

The Don Richter Memorial Scholarship Committee is pleased to announce the selection of a candidate for 2011. The committee received applications from Alaska and the lower 48 states for the scholarship. All defined excellent research projects in Alaska, so the decision was difficult as always. The committee selected Erin Donaghy, a third year undergraduate student at Bucknell University in Pennsylvania. Erin's project, "Sedimentology, depositional age, and provenance of sedimentary and volcanic rocks exposed along Willow Creek, eastern Susitna basin, south-central Alaska" will examine in detail rocks that have been correlated with the Arkose Ridge Formation but lack geochronologic data. Erin will map the geology along Willow Creek, measure sections and perform lithofacies analyses, constrain the age of the unit with U-Pb detrital zircon ages from the sedimentary rocks and Ar-Ar ages from the interbedded volcanic rocks, and compare the rocks to the type section of the Arkose Ridge Formation. She hopes to contribute to knowledge of the evolution of the Susitna basin and also to provide information for models of nonmarine deposition in forearc basins. Erin will receive \$1500 from the Don Richter Memorial Scholarship fund to support her investigations of the rocks on Willow Creek. Erin's research advisor is Jeff Trop.

Note: the Don Richter Memorial Scholarship is awarded to candidates in geoscience or equivalent degree programs whose project or thesis / dissertation topic focused on Alaskan geology or related geoscience topic with a preference for topics that reflect Don Richter's career interests, including but not limited to: volcanology, igneous petrology, the Wrangell Mountains, the Aleutian arc, the Talkeetna arc, and the stratigraphy of south-central Alaska.

Acknowledgements to Sue Karl for organizing the selection committee

Alaska Geological Society Scholarships

Hirotsugu Mori – PhD candidate at UAF, \$2000
Migration of the Late Cretaceous Arctic Hadrosaurs of North Slope, Alaska

Jake Mongrain – PhD candidate at UAF, \$500
Sedimentological, Stratigraphic and Paleoclimatic Investigations of a Tertiary Nonmarine Forearc Basin

Amy Dethlefs – MS candidate at APU, \$1000
Nutrient Limitation of the Snow Algae "Chlamydomonas nivalis" and its role in surface melt on the Harding Ice Field, Alaska

Erin Donaghy – BS candidate at Bucknell University, \$1000
Sedimentology, Depositional Age, and Provenance of Sedimentary and Volcanic Rocks exposed along Willow Creek, Eastern Susitna Basin, South Central, Alaska
NOTE: Also Richter Scholarship award

Brian Kramp – BS candidate at APU, \$1000
Processes Governing the Temporal and Spatial Patterns of Oxygen Isotopes in Winter Precipitation in South Central, Alaska

Acknowledgements to Robert Blodgett for organizing the selection committee

***The Alaska Geological Society is a 501c3 nonprofit organization.
Donations to these scholarship funds are tax deductible.***

Meeting Information

The **American Geological Institute** provides a comprehensive list of national and international geoscience meetings at: <http://calendar.agiweb.org>

Local Meetings:

American Water Resources Association—Alaska Section

<http://www.awra.org/state/alaska/index.html>

Alaska Geological Society

<http://www.alaskageology.org>

Lunch meetings are held monthly September through May in Anchorage. For more information, contact Jim Clough, 451-5030.

Alaska Miners Association

<http://www.alaskaminers.org/>

The Anchorage branch of the AMA holds weekly meetings at 7 AM every Friday at the Denny's on Northern Lights and Denali. They hold regular luncheon meetings in association with SME. For more information, contact the AMA office at 563-9229.

American Institute of Professional Geologists

<http://www.aipg.org>

AIPG holds regular quarterly evening Section meetings in Anchorage and Fairbanks. For more information contact Mark Lockwood, President, at Shannon & Wilson, Inc., in Fairbanks, 907-458-3142.

Chugach Gem & Mineral Society

<http://www.chugachgms.org>

CG&MS holds all meetings at the First United Methodist Church on 9th Avenue. Contact their hotline at 566-3403 for information on regular monthly business meetings, monthly potlucks, and guidebook sales, including the new Alaska Rockhound Guidebook.

Geophysical Society of Alaska

<http://gsa.seg.org/>

Luncheon meetings are held monthly September through May at the ConocoPhillips Tower. For more information, contact Phil Rorison, 265-6321

Society of Petroleum Engineers

<http://alaska.spe.org/>

UAS Environmental Science Program

<http://www.uas.alaska.edu/envs>

National Association of Geology Teachers (NAGT)

<http://www.nagt>

Enhanced Alaska Digital Well Log Data Since 1989

OCS, 95 out of 100 Alaska OCS wells. Mud logs for some.

North Aleutian Basin wells, onshore and offshore.

North Slope, 556 wildcats and key field wells.

Kuparuk River Field, first 567 wells drilled (pre-1985).

Southern Alaska, 1063 wells including all wildcats and many field wells. Directional surveys for most.

All digital log files

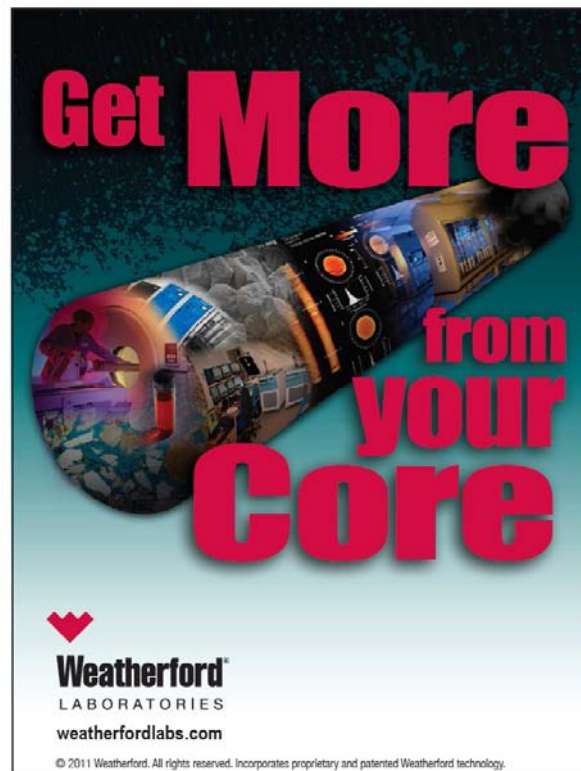
- Are depth shifted to match resistivity curves.
- Have core data rendered as a depth-shifted well log curve.
- Have SP both in original form and as a straightened curve.
- Have standardized mnemonics.
- Have Volume of Shale curves, derived from gamma ray for North Slope, derived from SP for Cook Inlet.
- Allow you to specify your own choice of mnemonics before delivery.
- Are updated periodically with new wildcat wells.
- Are delivered in LAS 2.0 format.

Contact Dan Shier:

303-278-1261

dan@rockypine.com

www.rockypine.com



Get More from your Core

Weatherford
LABORATORIES
weatherfordlabs.com

© 2011 Weatherford. All rights reserved. Incorporates proprietary and patented Weatherford technology.

With reservoirs becoming increasingly complex, you need the most accurate information you can get to better understand your reservoir.

Weatherford Labs helps you get more from your core by combining an unsurpassed global team of geoscientists, engineers, technicians and researchers with the industry's most comprehensive, integrated laboratory services worldwide. From core analysis, sorption, geochemistry and isotopic composition to detailed basin modeling and comprehensive data packages, we provide you with real reservoir rock and fluid information that hasn't been distilled by a simulator or iterated by software.

We call it "**The Ground Truth™**" – giving you the accurate answers you need for better reservoir understanding. You'll call it a better return on your reservoir investment. To learn more, contact TheGroundTruth@weatherfordlabs.com.

The Alaska Geological Society, Inc.
P.O. Box 101288
Anchorage AK 99510

On the web at: <http://www.alaskageology.org>

The Alaska Geological Society is an organization which seeks to promote interest in and understanding of Geology and the related Earth Sciences, and to provide a common organization for those individuals interested in geology and the related Earth Sciences.

This newsletter is the monthly (September-May) publication of the Alaska Geological Society, Inc. Number of newsletters/month: ~300

EDITOR
Greg Wilson
Alaska Geological Society, Inc.
P. O. Box 101288
Anchorage, AK 99510
e-mail: Gregory.c.wilson@conocophillips.com
(907) 263-4748 (office)

MEMBERSHIP INFORMATION

AGS annual memberships expire November 1. The annual membership fee is \$20/year. You may download a membership application from the AGS website and return it at a luncheon meeting, or mail it to the address above.

Contact membership coordinator Greg Wilson with changes or updates (e-mail: gregory.c.wilson@conocophillips.com; phone: 907-263-4690)

All AGS publications are now available for on-line purchase on our website. Check to see the complete catalogue.

<http://www.alaskageology.org/publications>

ADVERTISING RATES

Advertisements may be purchased at the following rates:
1/10 Page--\$190/9mo, \$75/1mo; size=1.8 x 3.5 inch
1/4 Page--\$375/9mo, \$95/1mo; size=4.5 x 3.5 or 2.2 x 7.5 inch
1/3 Page- \$470/9mo, \$105/1mo; size=7.0 x 3.5 or 3.0 x 7.5 inch
1/2 Page--\$655/9mo, \$125/1mo; size=9.0 x 3.5 or 4.5 x 7.5 inch
Full Page--\$1000/9mo, \$165/1mo; size=7.5 x 9.0 inch
1mo rate=(9mo rate/9)+\$50 (rounded up).

Contact Tim Ryherd (907) 269-8771 for advertising information.

**Place
Your Ad
Here**



Petrotechnical Resources Alaska

Alaska's Premier Oil and Gas Consultants

Skills

- > Project Management
- > Geophysics
- > Geology
- > Petrophysics
- > Engineering

Areas of Expertise

- > North Slope
- > Cook Inlet
- > Interior Basins
- > Bristol Bay
- > Gulf of Alaska

Data

- > Digital Well Logs
 - > Raw and interpreted data
- > Well History
- > Directional Surveys
- > Formation Tops
- > Seismic
 - > USGS NPRA lines
- > GIS
 - > Land Status
 - > Well locations

Tools

- > Subsurface mapping tools
- > Seismic interpretation tools
- > Petrophysical interpretation tools
- > ArcView/GIS tools

We can provide clients with individuals to fill specific needs, or with integrated teams to manage exploration and development projects.

For information about PRA including background material and a complete listing of our consultant staff, please visit our website at:

www.petroak.com.

Contact us at:

PRA

3601 C Street, Suite 822

Anchorage, AK 99503

(907) 272- 1232, (907) 272- 1344 (fax)

info@petroak.com www.petroak.com

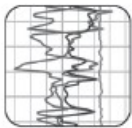
Get Ahead of the Game



Directional Survey Plus



Production Data



Digital Well Logs



With High Quality Well Data From TGS

Need an extra edge on the competition? TGS' high quality well data, comprehensive coverage and dedicated customer support can get you to the finish line.

Directional Survey Plus

Beyond simple directional survey data capture, Directional Survey Plus data are thoroughly researched, reprocessed and standardized.

US Production Data

TGS' nationwide production database features a visualization tool, leading industry exports and daily incremental updates.

Complete Curve LAS

Over 500,000 LAS well logs are now available in North America. Over six million well logs available in 30+ countries worldwide.

Find out more at www.tgsnopec.com/welldata or contact TGS Well Data at 888-LOG-LINE or WellData@tgsnopec.com



Geophysical
Products



Geological
Products



Imaging
Services



www.tgsnopec.com

2010 - 2011 Alaska Geological Society Board

Note: e-mail addresses now contain "at" instead of "@" Please change to @ when typing.

		Phone	e-mail	Workplace
President	Tom Morahan	230-1672	Tmorahan at petroak.com	PRA/ConocoPhillips
Past-President	Tom Homza	770-3701	Thomas.Homza at shell.com	Shell
President-Elect	Bill Morris	265-6021	William.r.morris at conocophillips.com	ConocoPhillips
Vice-President	Ken Helmold	269-8673	Ken.helmold at alaska.gov	DNR / DOG
Treasurer	Al Hunter	263-7947	Alhunter at chevron.com	Chevron
Secretary	Chad Hults	786-7417	Chults at usgs.gov	USGS
Director 09-2011	Dave Boyer	564-5783	Boyerdl at bp.com	BP
Director 09-2011	Marwan Wartes	451-5036	Marwan.wartes at Alaska.gov	DNR / DGGS
Director 09-2011	Dick Garrard	244-1067	Rgarrard at talisman-energy.com	FEX
Director 09-2011	Lee Ann Munk	786-6895	aflm at uaa.alaska.edu	UAA
Director 08-2010	Lisa Wright	263-4823	Lisa.H.Wright at conocophillips.com	ConocoPhillips
Director 08-2010	Kirk Sherwood	334-5337	Kirk.Sherwood at boemre.gov	BOEMRE

Committees and Delegates

AAPG Delegate	Arlen Ehm	333-8880	arlenehm at gci.net	Geological Consultant
AAPG Delegate & 2011 Conf. Chair	David Hite	258-9059	Hitelamb at alaska.net	Geological Consultant
Advertising	Tim Ryherd	269-8771	Tim.ryherd at Alaska.gov	DNR / DOG
Com. Ed./Science Fair	Jana DaSilva Lage	677-7883	Jldasilva5 at hotmail.com	
Field Trips	Tom Plawman	227-2781	Tom.plawman at bp.com	BP
Bylaws	Sue Karl	786-7428	Skarl at usgs.gov	USGS
Memberships	Greg Wilson	263-4748	Gregory.c.wilson at conocophillips.com	ConocoPhillips Alaska
Newsletter Editor	Greg Wilson	263-4748	Gregory.c.wilson at conocophillips.com	ConocoPhillips Alaska
Publications	Peter Johnson	334-5329	Peter.Johnson at boemre.gov	BOEMRE
Scholarship	Robert Blodgett	646-1922	robertBBlodgett at yahoo.com	Geological Consultant
Website	Jan Hazen		Jan at homestead-graphics.com	Consultant
Fundraising	Sunny Foster	269-8707	Sunny.Remmy at Alaska.gov	DNR / DOG

Alaska Geological Society, Inc.
P. O. Box 101288
Anchorage, AK 99510