

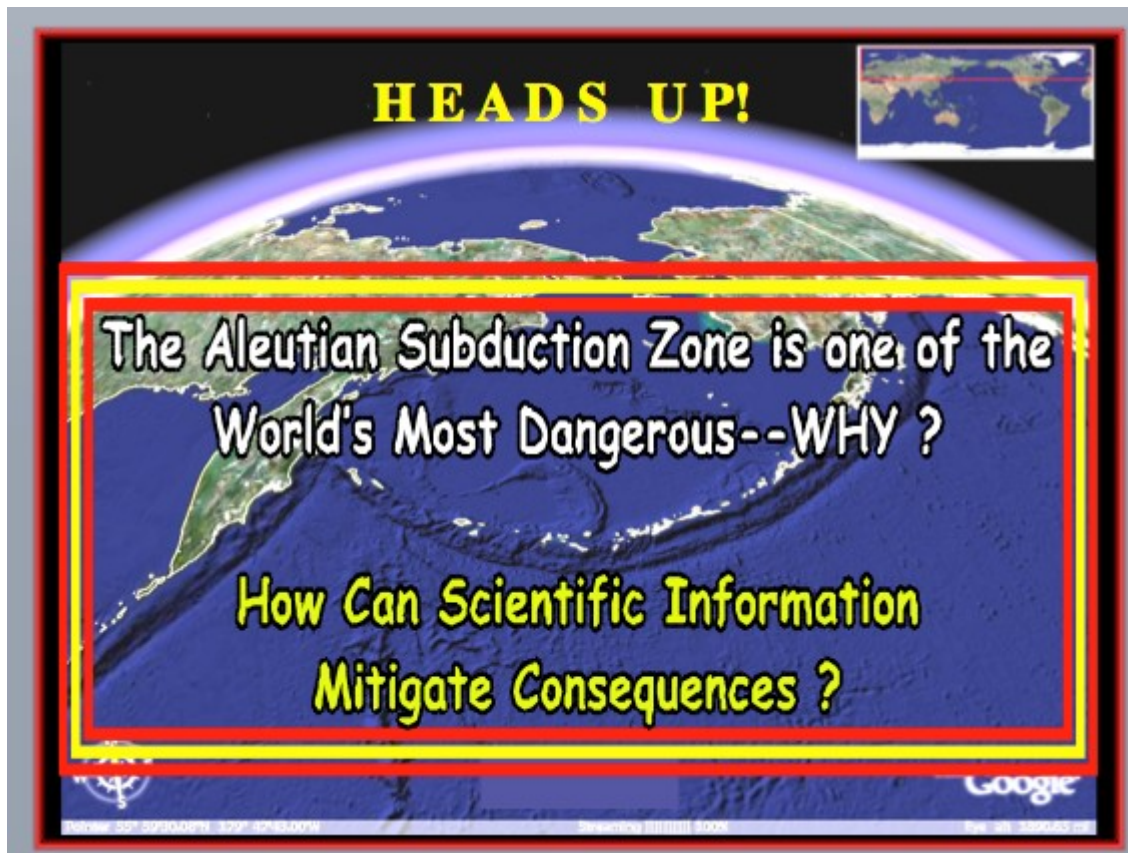


Earthquake & Tsunami Hazards Of the Aleutians

David Scholl

Emeritus Scientist, US Geological Survey
Sydney Chapman Professor, University of Alaska, Fairbanks

*Note: AGS meetings will be at the BP Energy Center for 2010-2011.
Please check the website (www.alaskageology.org) and issues of the AGS newsletter for updates.
This newsletter promotes the September luncheon talk of the Alaska Geological Society,
to be held Thursday, September 16th, at the BP Energy Center.*



Abstract to appear on Alaskageology.org when available

AGS Luncheon

Date & Time: Thursday, Sept. 16th, 11:30 am – 1:00 pm

Program: Earthquake & Tsunami Hazards of the Aleutians

Speaker: David Scholl

Place: BP Energy Center

Reservations: Please make your reservation before noon Tuesday Sept. 14th, 2010.

Cost: Seminar only, no meal: Free
Reserve a box lunch: \$13
Nonmember: \$15

Reserve a hot lunch: \$20
Nonmember: \$22

No reservation: add \$5 to the above
(on an "as-available" basis only)

E-mail reservations: vp@alaskageology.org
Or phone (907) 269-8673
(Ken Helmold, AGS VP)

For more information: visit the AGS website:

www.alaskageology.org

The Alaska Geological Society

LUNCHEON SCHEDULE 2009 - 2010

Updates on the web at:
<http://www.alaskageology.org>

September 2010	Thurs., Sept. 16 th , David Scholl, USGS, Earthquake and Tsunami Hazards of the Aleutians
October 2010	Thursday, Oct. 21 st , Lisa Wirth, UAF Alaska Satellite Facility, Geologic Use of Satellite Imagery Data
November 2010	Thursday, Nov. 18 th , Bob Swenson, DGGs, Energy Development in Alaska (date tentative)
December 2010	Thursday, Dec. 9 th - OPEN
January 2011	Thursday, Jan. 20 th - OPEN
February 2011	Thursday, Feb. 17 th , James Coleman, USGS, Tight-Gas Sandstone Reservoirs (AAPG Distinguished Lecturer)
March 2011	Thursday, March 17 th - OPEN
April 2011	Thursday, April 21 st , Erik Hulm, BP Alaska, Heavy Oil of Alaska
May 2011	Thursday, May 19 th - OPEN

If you would like to volunteer a talk or would like to suggest a speaker, please contact Ken Helmold at 269-8673



PACIFIC SECTION

P.O. BOX 1072 BAKERSFIELD, CALIFORNIA 93302

American Association of Petroleum Geologists

OFFICERS

2009-2010

President

SCOTT HECTOR

Hobby Energy

P.O. Box 959

Rio Vista, CA 94571

707 974 8402

scott@hobbyenergy.com

President Elect

CYNTHIA HUGGINS

Area Energy, LLC

15000 Ming Ave.

Bakersfield, CA 93311

951 665 5074

chuggins@areaenergy.com

Vice President

TONY REED

Vintage Production California LLC

9000 Ming Ave., Ste. 300

Bakersfield, CA 93311

951 805 8244

tony_reed@vpc.com

Secretary

JEFF GARTLAND

Vintage Production California LLC

9000 Ming Ave., Ste. 300

Bakersfield, CA 93311

951 805 8244

jeff_gartland@vpc.com

Treasurer 2009-2010

DOMINA THOMPSON

San Joaquin Energy Consultants

1402 Easton Dr., Suite 133

Bakersfield, CA 93309

951 395 3229

spc@sjogobal.net

Treasurer 2009-2011

CHERYL BALMES

Schlumberger

4900 California Ave. #4014

Bakersfield, CA 93309

951 854 4722

treasurer@psaapg.org

Past President

DOM CLARKE

Consultant

308 Greenwood Ave.

Lakewood, CA 90712-1129

951 212 9034

pastpresident@psaapg.org

Editor in Chief 2009-2010

KAREN BLAKE

Hobby Energy

P.O. Box 959

Rio Vista, CA 94571

707 974 8113

kab@hobbyenergy.com

AAPG Advisory Council

KURT NEHER

Occidental Oil and Gas

10000 Stockdale Hwy.

Bakersfield, CA 93311

951 412 5203

kurt_neher@ocg.com

Publications Chair

LARRY KAUBER

Chevron

P.O. Box 1302

Bakersfield, CA 93302

951 554 7953

lkauber@chevron.com

Web Master

BOB COBBERTYMAN

Consultant

15078 Rockwood Springs Dr.

Bakersfield, CA 93314

951 589 8040

ccobbertyman@bakr.com

May 12, 2010

Mr. Michael J. Warren

Dear Michael:

It is my pleasure to inform you that you are the recipient of the American Association of Petroleum Geologists (AAPG) "Excellence in Teaching Award" for the year 2010. The award is presented by the Pacific Section of the AAPG to the 8th grade students of the Exploration Alaska team. Therefore, we elected you as the recipient of this award.

As the recipient of this award, you will receive a check for \$5000. The presentation of the award will be at the AAPG's 2010 annual convention which will be held in Denver, Colorado. We will be pleased to have you and your family join us for this special occasion. Please let us know if you need any assistance with the award.

In addition to our award, you will receive a \$5000 prize from the National AAPG, where you will receive a check for \$5000. We will be pleased to have you and your family join us for this special occasion. Please let us know if you need any assistance with the award.

Again, thank you for your outstanding work in teaching geospatial technology to the 8th grade students at your school, reviewed the Google Earth Quest: Minerals and were very impressed.

Sincerely,

Scott T. Hector
President
Pacific Section AAPG

Community Education Corner

RE.: AAPG Excellence in Teaching Award

Dear Michael:

It is my pleasure to inform you that you are the recipient of the Pacific Section of the American Association of Petroleum Geologists ("PSAAPG") "Excellence in Teaching Award" for the year 2010. The Executive Committee of the PSAAPG evaluated your work in teaching geospatial technology to the 8th grade students at your school, reviewed the Google Earth Quest: Minerals and were very impressed. Therefore, we elected you to receive the award.

Congratulations to Michael Warren!
Michael was nominated by AGS for PS-AAPG Teacher of the Year.

Our thanks to Jana DaSilva Lage for chairing Community Education issues for AGS

From the President's Desk

Welcome, everyone, to an exciting new season of activities with the Alaska Geological Society! An organization like ours needs year-to-year continuity to be effective, and with nine of twelve board members returning for the 2010-2011 year and all of the committee chairs remaining in place, we should be high in that category. Our society has gone through some significant structural changes over the past few years, and it's fortunate that most people who participated in the transition are still in place on the board. Our monthly luncheon format and venue have not changed, so it may not be apparent to many of our members what changes I refer to. Without going too deeply into it, a little over a year ago we successfully converted to a 501(c)3 non-profit organization. This has allowed us to receive tax-deductible donations and, therefore, to concentrate more on serving the geoscience community through scholarships and awards. In conjunction with this conversion it was necessary to re-write our by-laws to be consistent with the 501(c)3 status. Moving forward, we will be looking to establish new fund raising opportunities and, hopefully, join the Pick, Click, Give list by 2012. The credit for these changes goes to our Past-President, Tom Homza, his predecessor, Jim Clough, and the tireless efforts of Sue Karl, who first proposed the conversion in 2004 as a means to provide more scholarship funding to geoscience students studying the geology of Alaska.

I'd like to welcome our new Directors, Kirk Sherwood and Lisa Wright, and our President-elect, Bill Morris, and thank them for their willingness to serve our society. None of them is a stranger to doing things for the AGS, so I really look forward to having them participate on the Board. I'd also like to thank departing Directors Rick Levinson and Laura Gregersen and our departing Past-President, Jim Clough, for their most recent service to the society. I'm pretty sure that we will see them again, as all are long-term supporters.

The highlight of the coming year will be our participation as the Local Hosting Society for the 2011 Pacific Section AAPG/Western Region SPE Joint Meeting, "Arctic to the Cordillera: Unlocking the Potential", to be held in Anchorage May 9-11. (Please see the announcement in this newsletter.) David Hite has stepped forward to become the General Co-Chair for the geoscience side of the meeting, and he is supported by Technical Chairs Sandy Phillips and Steve Wright, and Conference Treasurer, Al Hunter, who is also continuing as AGS Treasurer. I'm sure that more key volunteer positions will be announced in the near future. The last time that we had a similar undertaking was in 2006 when we hosted a regional joint AAPG/SPE/GSA meeting. Putting together a large conference like this is a huge undertaking requiring many volunteers, so please consider getting involved as calls go out. And don't forget to thank Dave, Sandy, Steve, and Al when you see them for rising to the tasks at hand.

Our luncheon speaker this month is David Scholl of the USGS in Menlo Park. David has a long and productive career with the USGS, and has published numerous articles on tectonics and sedimentology of the Aleutians and Bering Sea. I'm looking forward to meeting and listening to one of the pioneers of modern tectonics studies in Alaska. And thanks to Ken Helmold for lining up the talk and for returning for to be our VP and program chair for a second year. Ken selected an excellent program of luncheon speakers last year, and is hard at work providing more of the same for the 2010-2011 year.

We are always looking for ways to improve our programs and activities. If you have suggestions or proposals for our Board of Directors, or would like to get more involved with the Society, please contact me. Contact information for all of our board members and committee chairs is listed at the end of this newsletter.

-Tom



MICROPALAEO
CONSULTANTS

182 WELL NORTH SLOPE - BEAUFORT SEA BIOSTRATIGRAPHIC DATABASE OF INTEGRATED FORAMINIFERA & PALYNOMORPH ZONE TOPS

Excel spreadsheet format on CD. Color-coded paleoenvironments (water depths)

In addition, for 85 Proprietary Wells included are: Integrated, Foram & Paly Summaries, Hi-Res Biostratigraphic Plots with diversity/abundance, cumulative faunal & floral displays & graphic biofacies plots.

For more information, list of wells, & price contact:
Micropaleo Consultants - (760) 942-6082 or micropaleo@cox.net
Hideyo Haga - (619) 421-1692 or hhpaleo@cox.net

**Conference Dates:
May 9th – 11th, 2011**

Technical Session Topics Include:

Oral Sessions

- Geology and Hydrocarbon Potential of the North Slope, Offshore Beaufort and Chukchi Seas
- Cook Inlet Oil and Gas Fields
- Recent advances in Exploration and Development on the North Slope
- Reservoir Quality: Analysis and Prediction
- Integrated Reservoir Description: Case Studies and Best Practices
- Environmental Geology and Geohazards: Applications for Resource Development
- Reservoir Modeling: Techniques, Workflows and Case Studies
- Paleozoic and Proterozoic Geology of Alaska
- Technology: Advances and Applications
- Alternative Energy: Progressing the Future
- Petroleum Systems in Alaska and the Western Cordillera
- Advances in Seismic Data Acquisition and Processing
- Case Histories and Reservoir Characterization: Application of Seismic and other Geophysical Data

Poster Sessions

- Technology: Advances and Applications
- Integrated Reservoir Description and Modeling
- Geology, Tectonics and Resource Potential of North Alaska
- Oil and Gas Fields of Alaska: Case Studies

Arctic to the Cordillera: Unlocking the Potential

The 2011 Pacific Section of the American Association of Petroleum Geologists (PS-AAPG) meeting will be held in Anchorage, Alaska – the gateway to the 'Last Frontier'. The Pacific Section of SEPM and the Pacific Coast Section of SEG will also be participating in the conference and will co-sponsor several of the technical sessions. The Western Region of the Society of Petroleum Engineers will be co-hosting the conference and helping to provide a cross-discipline forum that offers attendees a wide variety of technical presentation, poster sessions, short courses and field trips.

The themes for the conference will include exploration and development case studies, technology applications and recent advances, alternative energy, environmental geology and geohazards in resource development, and petroleum systems in Alaska, the circum-Arctic, and the western US.

For this to be a successful meeting we need you, your ideas, and your participation. We look forward to a series of stimulating and insightful sessions that will continue to address and lead to solutions for many of the technological, environmental, and political challenges the industry is faced with today.

You are invited to get involved and help shape this conference by submitting an abstract for an oral or poster presentation in the technical program. So, please review your recent work and put together an abstract for a contribution to the technical program. Abstract submissions can be made at the following website between **October 1, 2010 and February 11, 2011**.

<http://www.>

For additional information please contact:

David Hite, PS-AAPG, General Co-Chair: hiteconsult@acsalaska.net

Sandy Phillips, PS-AAPG, Oral Session Chair: sandra.phillips@bp.com

Steve Wright, PS-AAPG, Poster Session Chair: sswr@chevron.com



Pacific Section
American Association of
Petroleum Geologists



Society for
Sedimentary Geology



Society of
Exploration
Geophysicists



Alaska
Geological
Society



Society of
Petroleum
Engineers

Meeting Information

The **American Geological Institute** provides a comprehensive list of national and international geoscience meetings at: <http://calendar.agiweb.org>

Local Meetings:

American Water Resources Association—Alaska Section

<http://www.awra.org/state/alaska/index.html>

Alaska Geological Society

<http://www.alaskageology.org>

Lunch meetings are held monthly September through May in Anchorage. For more information, contact Jim Clough, 451-5030.

Alaska Miners Association

<http://www.alaskaminers.org/>

The Anchorage branch of the AMA holds weekly meetings at 7 AM every Friday at the Denny's on Northern Lights and Denali. They hold regular luncheon meetings in association with SME. For more information, contact the AMA office at 563-9229.

American Institute of Professional Geologists

<http://www.aipg.org>

AIPG holds regular quarterly evening Section meetings in Anchorage and Fairbanks. For more information contact Mark Lockwood, President, at Shannon & Wilson, Inc., in Fairbanks, 907-458-3142.

Chugach Gem & Mineral Society

<http://www.chugachgms.org>

CG&MS holds all meetings at the First United Methodist Church on 9th Avenue. Contact their hotline at 566-3403 for information on regular monthly business meetings, monthly potlucks, and guidebook sales, including the new Alaska Rockhound Guidebook.

Geophysical Society of Alaska

<http://gsa.seg.org/>

Luncheon meetings are held monthly September through May at the ConocoPhillips Tower. For more information, contact Phil Rorison, 265-6321

Society of Petroleum Engineers

<http://alaska.spe.org/>

For more information, contact Jack Hartz at 375-8239.

UAS Environmental Science Program

<http://www.uas.alaska.edu/envs>

National Association of Geology Teachers (NAGT)

<http://www.nagt>

Enhanced Alaska Digital Well Log Data Since 1989

OCS, 95 out of 100 Alaska OCS wells. Mud logs for some. North Aleutian Basin wells, onshore and offshore. North Slope, 556 wildcats and key field wells. Kuparuk River Field, first 567 wells drilled (pre-1985). Southern Alaska, 1063 wells including all wildcats and many field wells. Directional surveys for most.

All digital log files

- Are depth shifted to match resistivity curves.
- Have core data rendered as a depth-shifted well log curve.
- Have SP both in original form and as a straightened curve.
- Have standardized mnemonics.
- Have Volume of Shale curves, derived from gamma ray for North Slope, derived from SP for Cook Inlet.
- Allow you to specify your own choice of mnemonics before delivery.
- Are updated periodically with new wildcat wells.
- Are delivered in LAS 2.0 format.

Contact Dan Shier:

303-278-1261

dan@rockypine.com

www.rockypine.com



SYNERGY ENERGY

Weatherford
LABORATORIES

At Weatherford Laboratories, we provide a single source for comprehensive laboratory analyses, creating a synergy previously unknown in laboratory services. This single source supplies the broadest portfolio of services for acquiring and interpreting data from physical samples worldwide. The end result is more precise development planning and reduced reservoir uncertainty.

Put our union of Synergy and Energy to work for you.

Weatherfordlabs.com

NORTH AMERICA NAInquiries@weatherfordlabs.com	EUROPE LATIN AMERICA	ASIA PACIFIC MIDDLE EAST/NORTH AFRICA
---	---------------------------------------	--

The Alaska Geological Society, Inc.
P.O. Box 101288
Anchorage AK 99510

On the web at: <http://www.alaskageology.org>

The Alaska Geological Society is an organization which seeks to promote interest in and understanding of Geology and the related Earth Sciences, and to provide a common organization for those individuals interested in geology and the related Earth Sciences.

This newsletter is the monthly (September-May) publication of the Alaska Geological Society, Inc. Number of newsletters/month: ~300

EDITOR
Greg Wilson
ConocoPhillips Alaska, Inc.,
P.O. Box 100360
Anchorage AK 99510-0360
e-mail: Gregory.c.wilson@conocophillips.com
(907) 263-4748 (office)

MEMBERSHIP INFORMATION

AGS annual memberships expire November 1. The annual membership fee is \$15/year. You may download a membership application from the AGS website and return it at a luncheon meeting, or mail it to the address above.

Contact membership coordinator Mark Olson with changes or updates (e-mail: gregory.c.wilson@conocophillips.com; phone: 907-263-4690)

All AGS publications are now available for on-line purchase on our website. Check to see the complete catalogue.
<http://www.alaskageology.org/publications>

ADVERTISING RATES

Advertisements may be purchased at the following rates:
1/10 Page--\$150/9mo, \$60/1mo; size=1.8 x 3.5 inch
1/4 Page--\$300/9mo, \$75/1mo; size=4.5 x 3.5 or 2.2 x 7.5 inch
1/3 Page- \$375/9mo, \$85/1mo; size=7.0 x 3.5 or 3.0 x 7.5 inch
1/2 Page--\$525/9mo, \$100/1mo; size=9.0 x 3.5 or 4.5 x 7.5 inch
Full Page--\$800/9mo, \$130/1mo; size=7.5 x 9.0 inch
1mo rate=(9mo rate/9)+\$40 (rounded up).

Contact Tim Ryherd (907) 269-8771 for advertising information.

Newsletter Delivery Options

Your newsletter should be arriving via both an emailed PDF and regular mail. If you have an email account but have not received the PDF, please let the editor know. Also contact the editor if you wish to opt out of the paper copy.

Annual membership expires on Nov. 1st. Please renew if you have not already done so, or risk an interruption in your AGS emails and Newsletters.



Alaska's Premier Oil and Gas Consultants

- | | |
|----------------------|----------------------------------|
| <u>Skills</u> | <u>Areas of Expertise</u> |
| > Project Management | > North Slope |
| > Geophysics | > Cook Inlet |
| > Geology | > Interior Basins |
| > Petrophysics | > Bristol Bay |
| > Engineering | > Gulf of Alaska |

- | | |
|----------------------------|--------------------------------------|
| <u>Data</u> | <u>Tools</u> |
| > Digital Well Logs | > Subsurface mapping tools |
| > Raw and interpreted data | > Seismic interpretation tools |
| > Well History | > Petrophysical interpretation tools |
| > Directional Surveys | > ArcView/GIS tools |
| > Formation Tops | |
| > Seismic | |
| > USGS NPRA lines | |
| > GIS | |
| > Land Status | |
| > Well locations | |

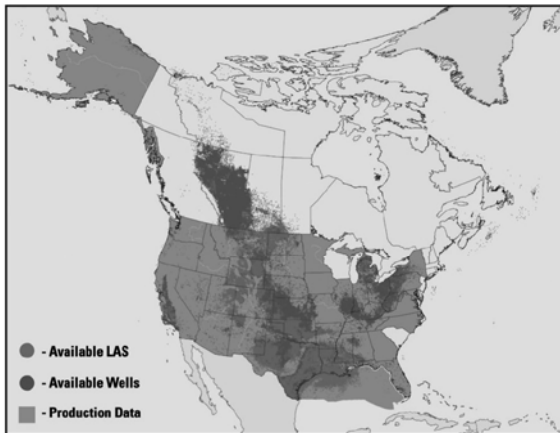
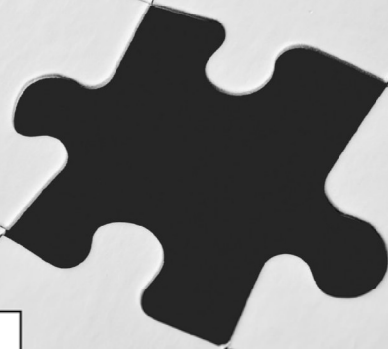
We can provide clients with individuals to fill specific needs, or with integrated teams to manage exploration and development projects.

For information about PRA including background material and a complete listing of our consultant staff, please visit our website at:
www.petroak.com.

Contact us at:

PRA
3601 C Street, Suite 822
Anchorage, AK 99503
(907) 272- 1232, (907) 272- 1344 (fax)
info@petroak.com www.petroak.com

Missing well data?



Let TGS complete the picture.

TGS adds hundreds of complete LAS everyday to the **world's largest LAS library**, with well logs in 29 countries.

And since you asked for it, we now have nationwide **US Production Data**.

Our well data is online, available immediately, with a team of **dedicated customer support** specialists there for you.

If your own proprietary well files are piling up, our new team of **well data solutions** experts can build a custom solution suited to your needs.

For more information, call 888 LOG-LINE or email us at WellData@tgsnopec.com



www.tgsnopec.com

NORWAY +47 66 76 99 00 | USA +1 713 860 2100 | UK +44 (0) 1234 272122 | AUSTRALIA +61 8 9480 0000
© TGS-NOPEC Geophysical Company. All rights reserved.

2009 - 2010 Alaska Geological Society Board

Note: e-mail addresses now contain "at" instead of "@" Please change to @ when typing.

		Phone	e-mail	Workplace
President	Tom Morahan	230-1672	Tmorahan at petroak.com	PRA/ConocoPhillips
Past-President	Tom Homza	770-3701	Thomas.Homza at shell.com	Shell
President-Elect	Bill Morris	265-6021	William.r.morris at conocophillips.com	ConocoPhillips
Vice-President	Ken Helmold	269-8673	Ken.helmold at alaska.gov	DNR / DOG
Treasurer	Al Hunter	263-7947	Alhunter at chevron.com	Chevron
Secretary	Chad Hults	786-7417	Chults at usgs.gov	USGS
Director 09-2011	Dave Boyer	564-5783	Boyerdl at bp.com	BP
Director 09-2011	Marwan Wartes	451-5036	Marwan.wartes at Alaska.gov	DNR / DGGS
Director 09-2011	Dick Garrard	244-1067	Rgarrard at talisman-energy.com	FEX
Director 09-2011	Lee Ann Munk	786-6895	afim at uaa.alaska.edu	UAA
Director 08-2010	Lisa Wright	263-4823	Lisa.H.Wright at conocophillips.com	ConocoPhillips
Director 08-2010	Kirk Sherwood	334-5337	Kirk.Sherwood at boemre.gov	BOEMRE

Committees and Delegates

AAPG Delegate	Arlen Ehm	333-8880	arlenehm at gci.net	Geological Consultant
AAPG Delegate & 2011 Conf. Chair	David Hite	258-9059	Hitelamb at alaska.net	Geological Consultant
Advertising	Tim Ryherd	269-8771	Tim.ryherd at Alaska.gov	DNR / DOG
Com. Ed./Science Fair	Jana DaSilva Lage	677-7883	Jldasilva5 at hotmail.com	
Field Trips	Tom Plawman	227-2781	Tom.plawman at bp.com	BP
Bylaws	Sue Karl	786-7428	Skarl at usgs.gov	USGS
Memberships	Greg Wilson	263-4748	Gregory.c.wilson at conocophillips.com	ConocoPhillips Alaska
Newsletter Editor	Greg Wilson	263-4748	Gregory.c.wilson at conocophillips.com	ConocoPhillips Alaska
Publications	Peter Johnson	334-5329	Peter.Johnson at boemre.gov	BOEMRE
Scholarship	Robert Blodgett	646-1922	robertBBlodgett at yahoo.com	Geological Consultant
Website	Jan Hazen		Jan at homestead-graphics.com	Consultant
Fundraising	Sunny Remy	269-8707	Sunny.Remmy at Alaska.gov	DNR / DOG